

Ode ga Ina la Ihi ɔrɔ̄rǎ

Title Page

Illustrations by Mr. B. C. Onah and others

Prepared by the Yala Literacy Team:

Mr. Joseph Ajima.

Mr. Anthony Okache

Mr. Ron Merritt

P.M.B. 101, Ogoja, South-Eastern State

Nigeria

This Primer is the fifth in a series of six primers in the Yala language.

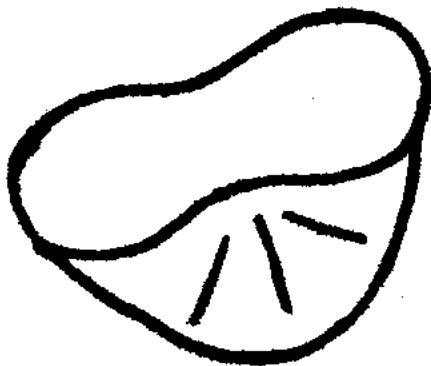
Many Yala literates, teachers, and others have given valuable assistance In preparing these books particularly in editing the materials

The Purpose of this Primer

This book is designed to be used in the first year of Yala primary schools

This book is also intended for use in adult education classes.

Ode ga Ina la Ihi ɔrɔ̄rǎ



ɔba tū

Alitekpa ga yenyi ɔtiyatū

Wōdɔ nīi è ye la ɔtiyatū ànɛ.

Alwɔtè bī wɔtā bāla àyāā.

Anyā bī ɔbatū.

ɔbatu	u
tu	tu
u	ɔbatu

u	a	ɛ
tu	ta	tɛ

Yenyi ɔláā tu ebé lechi lecchi.

É cha la yenyi ɔtiyatu la ɔnē.

É de ebé yī ɔgabō

tū la ɔbatū.

ɔbatū yī ebé yī ɔgabō tū itārú.

ɔgabō de wɔɔtū.

ɔgabō ka éle chá anú echá.

Ebé de yéeya re la ɔbatū.

ɔtarú gāā gé de itārú wú.

tu

ta

te

È de yéba tū la ɔbatū bēēnē.

Ɖtarú nāa ebé la ɔbatū ga

wɔlé yī ɔgabɔ.

Ɖgabɔ i wɔɔtū ge ni.

tu	ta	te	tɔ
kpu	kpa	kpe	kpɔ
nu	na	ne	nɔ
ru	ra	re	rɔ



Ihú ré abahi la yerō yī Lihu.

Lihu ta rēeda la yerō yī nū.

Lihu ta rēeda arāatá.

Leda yī ihú nīi Lihu tá àne.

ihu	u
hu	hu
u	ihu

u	a	i
hu	ha	hi

hu
ha
hi

Lihu hi yerō yī nū la wōhā.

Ihú yà abahi yī Lihu iho

la wōhā.

È ré lùhù-lùhù.

Lihu de lèhèhà.

Lihu kpó abō epepache la lèhù.

Lihu ka anòlò géē yà kaná má?

Onya yī nū ka òlò chī géē

yà kaná?

Èlè gbàa ē he ihù owù yī uwī

Ōwōwī kpàa?

Lihu bŭ ga lɛda yī nŭ

la ɔchī mǎ,

Lɛda gwō ihú ene.

Lihu wú ihú ene la lɛda.

Ɛhɔ de ihú ɔhǎ rɛ chǎchǎ.

Lɛda ɔhǎ, uhū tū la anú.

Uhū ɔnēchi tu lɛda yī Lihu.

Lihu hehe la wɔhǎ tū

uhū yī nŭ.

Lihu de uhū wā bāla ihú

che la lehú.

Lihu wú uhū bāla ihú

la uhū yī ɔnē.

Uhū - ɔrɔ́rǎ nɛ.

Ihú - iyī ɔrɔ́ nɛ.

kpu

hi

he

kpa

ha

hɔ

tu



ōrōkpō

Ōrōkpō kū ūkpō la ohì.

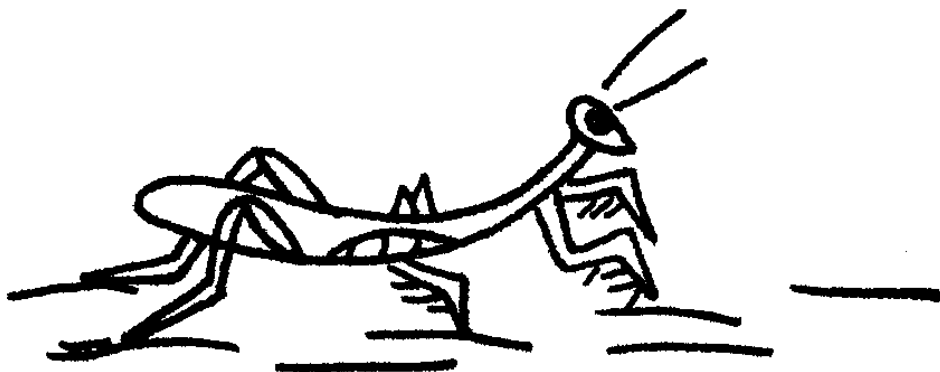
Ó ga ūkpō la owóōwú la óhó.

Ōrōkpō bū wólé yī lidō.

Lidō le ɔchi yī ūkpō àne.

orokpo	kpo
kpo	orokpo

o	o	o
go	ko	kpo



ogor i go

Ōrōkpō tū obóchi la
wólé yī lidō.

Lidō le ɔchi yéyè áne.

Lidō ka ōrōkpō ɔlɔ gé
de ogorigo bála orò.

ogorigo	o
o	ogorigo

o	o	o
ogo	oko	okpoo

Ōrōkpō ga ogorigo bála oró
la ɔgālá.

Ōrōkpō de ogorigo kú bī wā
la wɔlé.

Ó ga oró la ɔgālá la ihō.

Ukpúuche tá gaa tū lidō la
wɔlé.

Uche háábō daa wā gè kò lidō.

Ōrōkpō cha la oró wā la wɔlé.

Ó i du lidō la wɔlé ge ní.

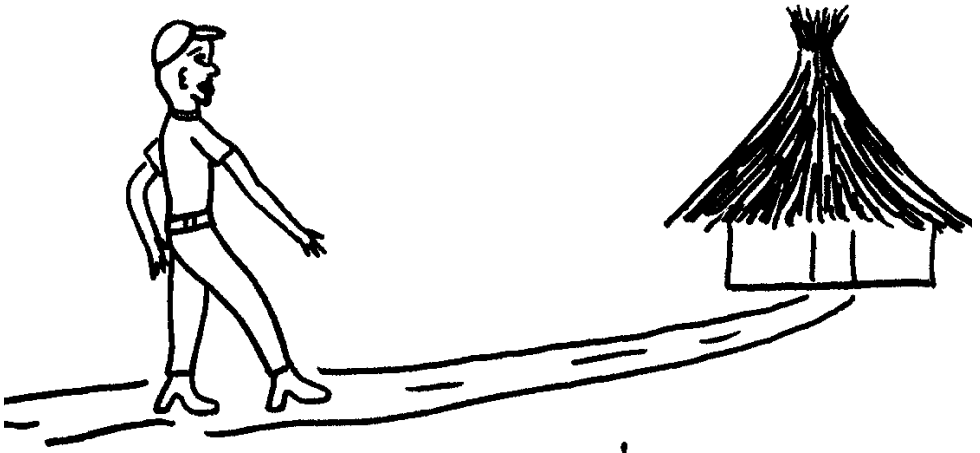
Uchē de lidō tū kò.

Ōrōkpō de Ogorigo bà la àbàa

ò tú hī lídō.

Ó gaga la lenya-lenya chē

ga wólé.



Wólé yī Okō ne.

Ógidi ga wólé yī Okō.

Ó ga leche la ɔ́tɔ́ta la ebe
yī Okō.

Leche lā la wólé yī Okō.

Ógidi kwiīyē.

Ógidi - ɔ́léche ne.



Ógídí ga léche la otótá
la ébe yī Okō.

Ó ē de léche lā la iyōbū yī nū

óbū nīi ó ē ta léche áne.

Léche ē lā lékékó,

anú ɔɔjā hō la lékékó.

Ógídí i wú ɔnyā ni.

Ó ē kū achālá la abō yī nū.

Èkò tóhí yī átūkpa wā la

Wólé yī Okō.

Ógidi nyō de átūkpa rá.

Ógidi rá atúkpa kpáa.

Atúkpa bála átūkpa – iyī

ɔrō nɛ.

Ógidi de átūkpa he la ogidi.

Ɔrō yī Ógidi trikwè le wɔnyɛ.

Ó de wɔná ré cháchá.

Ógidi de chōobū yī wóná

oroōré.

Léche bála wóná i chē

de ó ní.

Okō wá la erá yī léche

la ohī Ógidi.

Ógidi ka anóló i le gógó ní.

Ó de yá lā la linū.

Léche nū, lipú nū.

Ibiiyē i bā de ọ̀ gε ni.

Ogidi wā gè kú la otù yī

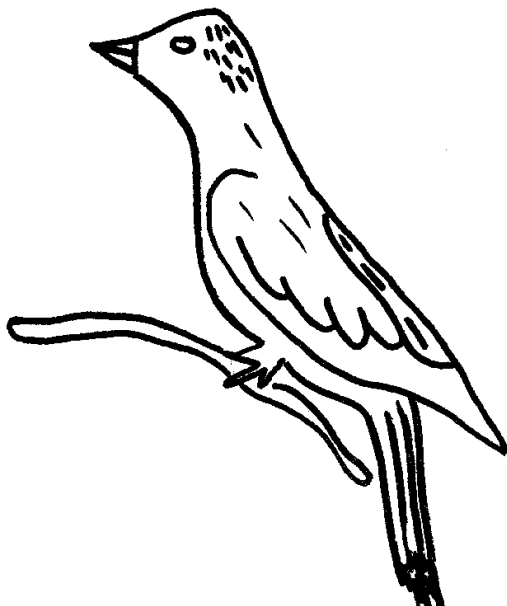
Ogidi hwa la ̄chī yī ikọ.

È de Ogidi nyi la Ina.

È de Lèche hè nyi lèkèkọ,

è de Ógidi nyi lèkèkọ.

wəpí



Ogugu bála inyēēpē tū

erō hu upu.

È ye gè ē de upu ē kú ɔchwōlé.

Agō ka wəpí ólɔ - ɔchwōlé ànɛ.

wəpí	i
pi	pi
i	wəpí

ɔ	i	o
pɔ	pi	po

Aà āche epepa wā la ɔchwōlè
la orōōré.

Wɔpi wu ɔpɔɔpē che ga wɔpi.

Wɔpi ka anólɔ - ɔyi ɔrɔɔchwōlè
áne.

pɔ
pi
po

pɔ	pi	po
hɔ	hi	ho
tɔ	ti	to

Upu ólò kóṣ le puche-puche
nīi ólò gé ē ré ṣchwōlé má?
Upu ólò í gé ē ré ṣchwōlé ní.
Upu ka ólò hwōhi.
Anólò ye abóó.
Ó píya ga iyē la ṣyóóyá
la wólé yī nū.
Upu de iyē yá cháchá.
Ó ru arú,tū ṣpá.
Arú bá lipata cháchá.
É de unu bī píya ga ikō.

Āche ka ɔlwəhú káká ɔ́lɔ gēē

ré ɔchwōlé ànɛ.

Wɔpi ka upu ɔ́lɔ gé túkū wā gɛ.

Upu í túbá gɛ ní o!

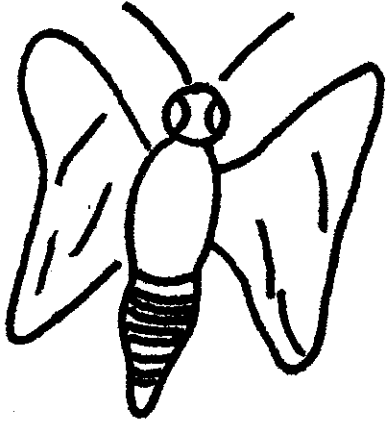
Upu de bá la iyē la ɔyɔ́yá.

É de wɔpi kú ɔchwōlé bēēnē.

Upu pīya ga ebé la oróōré.

Ó wu piyala-piyala pīya ga wólé

yī nū.



ipepe



énipipī

Énipipī bála ipepe réeya.

Énipipī énipipī ē ga ebe

yī ipepe áne.

Íchiche ðhá, énipipī

ka ipepe

óló í ē bī wā la ebe yī

anú ní o?

Ipepe ka wólé yī ólò oláā

ólò le anú uhuhwi.

Ènípípí ka wólé yī anú ólò

le uhuhwi kana?

Ó ka ɔgáhá nīi ólò ku tá káká

tū iyī ólò má, ólò le anú

uhuhwi áne.

Ènípípí ka ónya yī anú ólò

bī aá áne.

Ónya oláā ólò i kú olwólé ní.

Ipepe ka ólò hwóhi.

Íchiche òhá, ò pīya wáá ye
ga ebe yī ènipipī.

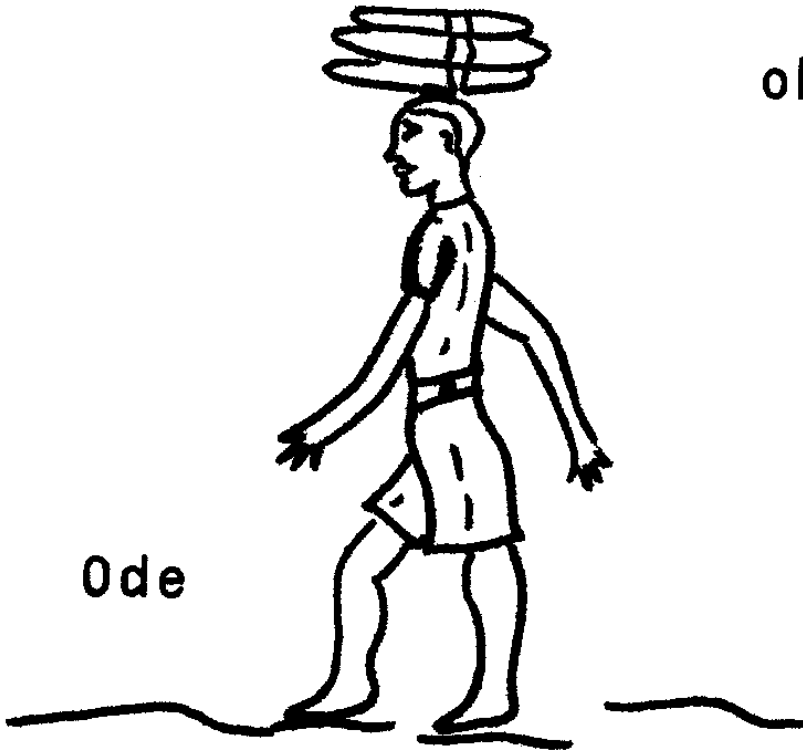
Ènipipī ka òlò gè wu yèyè/.

Ipepe ka anòlò gee wu che
la wólé yī òlò kée.

Ipepe wu gāa gè tátū
la ūrūwayī yī ènipipī.

Ènipipī ka í anòlò yá òlò
má ge ni.

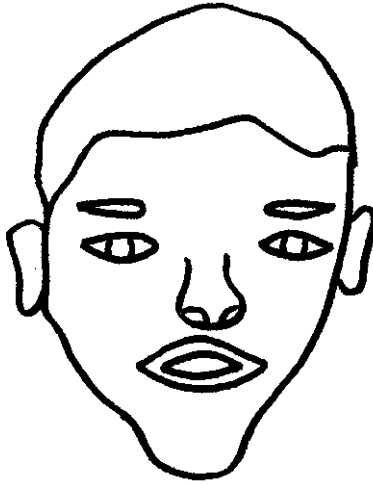
Ó de ipepe ré chóchó.



Ode

oko

Ode bī oko.



okóo

Ode ga ina la ihī ɔrɔ̄rɔ̄.

Ode bŭ la Ugáaga.

Ò bī ukpá bála oge.

Idu bála anú ye áne.

Idu bŭ la Aáakwa.

miya anú ge.

miya anú ge.

oko

okóo

Ihī nīi é ye gāa gé rá àné.

Óhudúu kú Idu wóchá.

Ode de abō lā ō.

Óhudúu pīyakú.

Abábóó la ɔpɔpū chichi,

oge tátū urúu gaa.

Ó háābō daa géē gwō urúu.

Urúu re hé wā la okóo yī

ɔpɔpū.

Oge ku ó la útútu ɔpɔpē

chichi.

Ode pī oge hiyáà géē

gō wā, urúu chē àchí.

Oge gō oge la wóchà.

Ode ka ọlọ gè àdāabēe!

Idu chichi ka ọlọgè lèbi

nē kóō.

È de abō kpó pī okóo rẹ

abóó chíí.

È tà urúu lẹyi.

È ka ọwọ ọlọ kō de ọlọ ichẹ.

Oge gwō kpakpa hīya dṓṓ.



È de okū yī oge nāa tū
la ahikò.

Idu ē rà yebòo yī òhì.

Ode ē rà ayi yī ihì edò.

È ga áywòdà la wóná
la oróòrè.

**Oróokpoo he wónà yī oko
re abóó.**

Ó de ebé yī urúu tū ɔrɔ.

É re wónà yī ikóbo arāane.

**Ode ku wónà yī oko bī ye
ga okóo má.**

Ó ka ɔ́lɔ de yanɔ́ tū

Wónà kūtū ?

Oróokpoo ka ɔ́lɔ - Oko ne.

Ode de wónà yī Oko tū

la okóo.

**Ò ka òlò lè wònyè
chòò.**

**Anòlò géē bédò
yī oko chichi.**

oko

okóò

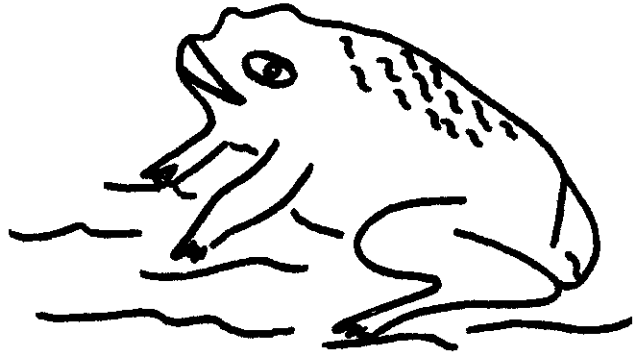
akwa

Aàakwa

akpa

akpáakwa

ikrīihu



Edu bála Ikrīihu yēē

wú ɔnyā.

Aá āche epepa ē tàyaha

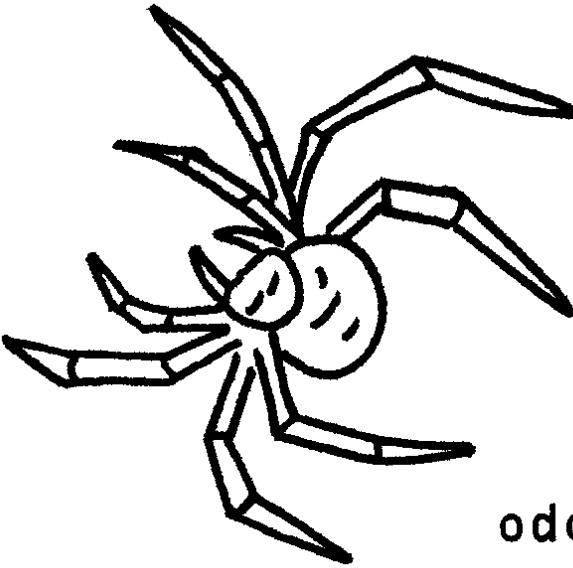
yī ɔnyā ukpóhe.

Ikrīihu de okpo onōbi ohu

ga ebe yī ɔnyā.

hīya anú ge.

bīya anú ge.



ododoblōodo

Edu chichi de ingingwō.

Ɔnyā de pīya ɔnyōnyiya.

Ododoblōodo - ɔya yī ikriihu ne.

Ɛnīpīpī - ɔya yī edu ne.

Ododoblōodo ka ɔya anú ɔlɔ gēē

wú ɔnyā àne.

**Ɔnyā ka angūu yī éle i hi anú
ɔtū ní.**

Ikrīihu ka anóló - okróbiya ne.

Lipú yī anú nīi ólò ē che aje

nīi ólò le teri-teri hō māmá,

Igbīihi má ólò gé ē le kaná má?

Ɔnyā ka ólò gé idiibīi.

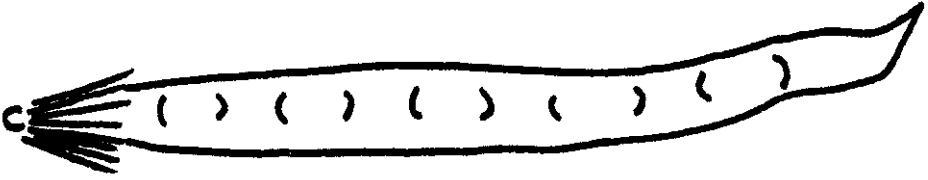
Ikrīihu ólò le kpanya-kpanya.

Ɔnyā i bláa ikrīihu ge ní.

Ɛdu de wú hī ikrīihu.



Itòodo wā la yerō gè ē rē ihī.



igiigri ne.

Okwóche ē hi ɔyéērō.

Ó nyi yebóo bála Igiigri kátá.

Yebóo yē yá la iyē yéyé.

Itóodo wā la yerō

géē ré ihī.

Itóodo ré ihī ikprūú yī

Iwú ohu arāapa.

Ibiīyē i bà de ɔkwóche ge ní.

Ɔkwóche chī de kū iprūu

la útu.

obrīihu nε.

Ɔkwóche nε.

arāapa nε.

itóodo nε.

arāane. nε.

igiigri nε.



Ọnya tákù ọbá yī itòodo.

Ọ chēri la ọnya wā la iyéechē.

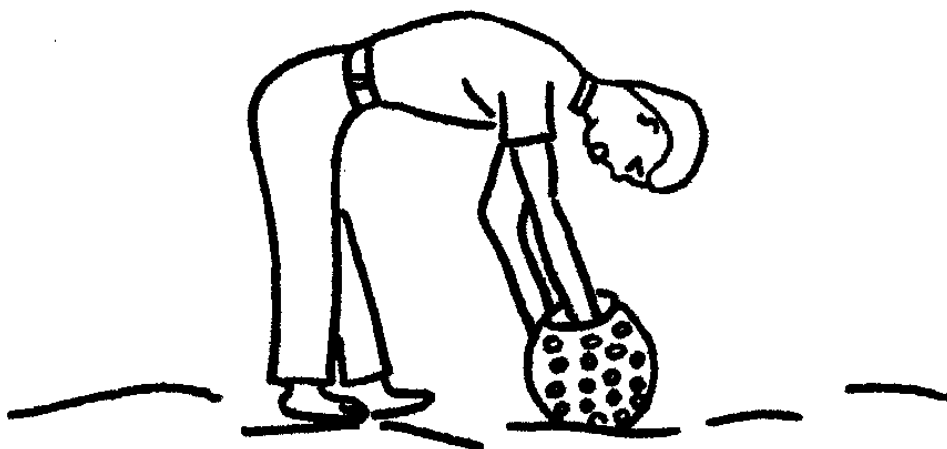
Ugō de ọnya nāa ga yerō.

Ọ de tu la útu yī okpòokpo.

Okpòokpo re yerō yī Ọkwóochē.

Itòodo i ga wā ge ni kpēē

la ọchī arāapa.



Ó wā gé wā ichiche ɔhá.

Ɔnya tákú ɔbá yī itóodo.

Ugɔɔ de ebé wá.

Ó de ebé kpó cha wā la wɔlé.

Ɔkwóɔche de ɔko yī ebé de ugɔɔ.

Ugɔɔ de ebé yī nū kpó tū

la obriihu.

Additional Instructions for the Teacher

The teacher may find a few weeks still remaining until the end of the school year. Even though the lessons have been completed, it is suggested that the teacher thoroughly review all that has been taught in both the Pre Reading and Primer 1 books.

If the student is to become fully literate in the mother tongue, he needs to continually practice reading and writing in Yala.

It is suggested that the teacher plan revision lessons for the remaining weeks of the school term. These lessons would cover all that had been taught during the entire school year.

The teacher's instructions for each page in these books can serve as a guide in helping the teacher plan these revision lessons.

